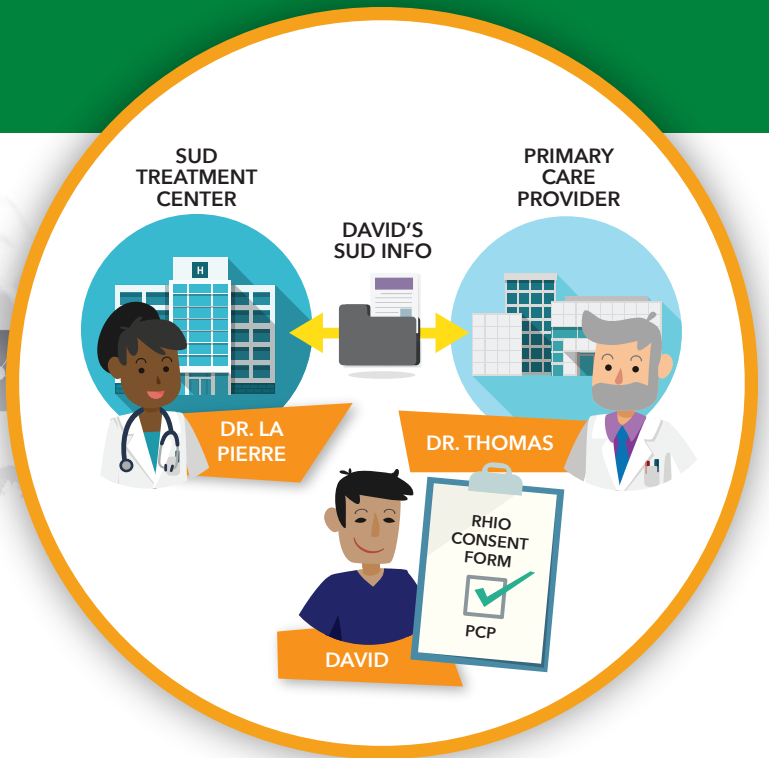


Important Changes to Substance Use Data



In 2019, Rochester RHIO will include specially protected substance use disorder and behavioral health care data (SAMHSA, Part 2) in its health information exchange. With patient consent, authorized users and medical professionals will be able to view this data immediately in a patient's record enabling better patient care.

CRISIS IN AMERICA

The opioid crisis has devastating effects on individuals, families, and communities across the United States. In 2017, 11.1 million Americans reported misuse of prescription opioids, nearly 900,000 reported heroin use, and 2.1 million had an opioid use disorder in the past year. In 2016, more than 42,000 Americans died from opioid overdose.

The federal Substance Abuse and Mental Health Services Administration (SAMHSA) is leading efforts to support the implementation of the full range of prevention, treatment and recovery support services to advance behavioral health and reduce the impact of substance use disorders in America.

WHAT THIS MEANS FOR AUTHORIZED USERS OF ROCHESTER RHIO SERVICES

New York State is requiring that all regional health information organizations that form the SHIN-NY, including Rochester RHIO, include specially protected substance use disorder and behavioral health care data (SAMHSA, Part 2) by **March 31, 2019**.

Responsible, secure sharing and use of this specially protected health information is a critical step in helping combat the opioid epidemic.

The following information is designed to help providers and authorized users gain a better understanding of secure Part 2 data sharing and how this information should be handled and used appropriately. See reverse for more information.

FAQs

WHAT IS SAMHSA, PART 2 DATA?

The Substance Abuse and Mental Health Services Administration (SAMHSA) is a federal agency under the U.S. Department of Health and Human Services. SAMHSA, or Part 2 data is a term that applies to any service received at a federally-assisted facility, provider or clinic for the treatment of a substance use disorder or behavioral health care.

NOTE: Specially protected substance use disorder or behavioral health care information is commonly referred to as "Part 2 data."

WHY DOES THIS MATTER TO ME?

As someone who has access to patient information via the Rochester RHIO, it is important that you understand your responsibility to be compliant with all relevant federal and state-required changes to Part 2 data delivery.

HOW WILL I KNOW IF SPECIALLY PROTECTED DATA IS AVAILABLE FOR A PATIENT?

Part 2 data will be included in an individual's medical history along with other health information. However, it may not be flagged as such. Clinicians and providers should presume that Part 2 data may be present when reviewing patient information from Rochester RHIO.

WHAT IF I NEED TO REFER A PATIENT?

The presence of specially protected data does not change your ability to refer patients, but patients who have Part 2 data contained in their RHIO record must provide a separate, written authorization to have their Part 2 data re-disclosed to another provider at a separate organization.

CAN MY PATIENTS CONTROL WHO HAS ACCESS TO THEIR DATA?

Yes! Patients have control over which providers are able to view their information. Patients give written consent for each provider they wish to have access; in some instances, this consent may provide access across an entire health or hospital system (if that system is deemed a single entity). For information on patient consent, go to rochesterrhio.org.

IS THE ROCHESTER RHIO CONSENT FORM UP-TO-DATE?

Yes! In 2017, federal SAMHSA regulations were updated. The changes affected health information organizations like the Rochester RHIO. As a result, Rochester RHIO's consent form was updated and approved by the New York State Department of Health.

WHAT HAPPENS IF SOMEONE RE-DISCLOSES PART 2 DATA WITHOUT AUTHORIZATION?

Whether intentional or inadvertent, re-disclosure of Part 2 data without authorization can carry significant penalties. Please ensure that you and your colleagues understand how to treat this information.

WHAT IF I HAVE ADDITIONAL QUESTIONS?

If you have additional questions about specially protected substance use or behavioral health information (Part 2 data), contact Rochester RHIO at 1-877-865-RHIO (7446). Learn more at rochesterrhio.org.

GENERAL COMPLIANCE TIPS FOR SHARING SPECIALLY PROTECTED DATA

SEEK WRITTEN AUTHORIZATION FOR EVERY REFERRAL

When a patient is referred, he or she must sign a separate, written authorization for you to share their specially protected (Part 2) substance use disorder information with a new provider. In addition, that provider or practice should have written consent to view patient data through Rochester RHIO.

DO NOT FORWARD SPECIALLY PROTECTED HEALTH CARE (PART 2) INFORMATION

A provider may be held liable if they share Part 2 data with another provider without the patient's express written authorization. Do not assume this has been obtained. This authorization is separate from the signed Rochester RHIO consent form.

USE YOUR OWN LOGIN AND PASSWORD

If another member of your practice logs into the RHIO Explore query portal with your username and password and re-discloses Part 2 data, you may be liable. Use your own login credentials, and do not provide them to anyone else.

EDUCATE YOUR PEERS

The Rochester RHIO standard patient consent form was updated in 2017 to be compliant with federal and state legal requirements for Part 2 data sharing. Keep in mind that any authorized user within a participating organization may be able to access patient data through Rochester RHIO for business purposes, including billing, auditing or medical treatment. Please help ensure that your team is aware of Part 2 data protection best practices.

CONSULT YOUR RHIO ADMINISTRATOR

Have a question? Ask your RHIO Administrator for help, or contact Rochester RHIO at 1-877-865-RHIO (7446). To learn more, go to rochesterrhio.org.