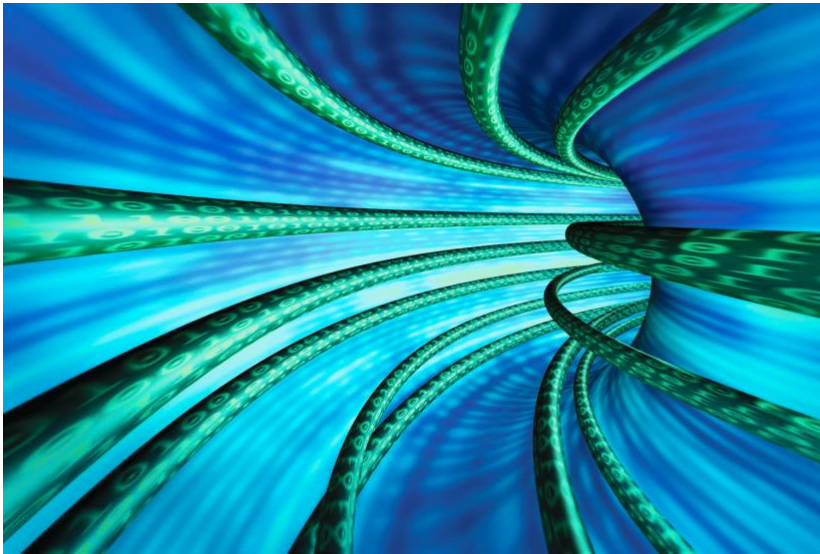




CONTRIBUTE



Become a Data Contributor to the RHIO health information exchange

Rochester RHIO Contribute is a call to providers to share data on the health information exchange.

What is Contribute?

Contribute is the Rochester RHIO's call to participating providers to share your patient data (CCDs) with the RHIO through your EHRs. With this additional data, the RHIO will be able to provide more complete patient health records, enabling the highest quality patient care—effectively transforming the healthcare system.



Transforming the healthcare system

Rochester RHIO's health information exchange includes 142 million clinical documents (and counting) that represent the medical history of more than 1.5 million residents in the 14-county Finger Lakes Region.



The Rochester RHIO covers:

14 counties

1.5 million residents

The transformation of healthcare delivery

The patient information that is gathered in an electronic health record (EHR) by healthcare providers is the rich source of data that better creates a robust, community patient health record.

By adding data contributed by healthcare providers, the RHIO will be able to support providers in meeting requirements for participation in community care initiatives, including Value-Based Payment, DSRIP, ACO and PCMH programs.

The RHIO is collaborating with these care initiatives to facilitate exchange of health information with the goal of increasing the efficiency of health care delivery and the quality of patient care.



Rochester RHIO
Greater Rochester Regional Health Information Organization
200 Canal View Blvd., Suite 200 • Rochester, NY 14623
www.RochesterRHIO.org 1.877.865.RHIO (7446)



To improve care. To improve care delivery.

Certified EHRs have the capacity to send this essential data to the RHIO, usually via C-CDA format, and the RHIO's HIE platform is ready to accept this patient health information.

Provider EHRs can add 20 data elements to the RHIO that will build a more complete, longitudinal medical record, including, but not limited to:

- | | | |
|---|---|---|
| <ul style="list-style-type: none">• Encounters• Demographics• Medications | <ul style="list-style-type: none">• Labs• Allergies• Vitals | <ul style="list-style-type: none">• Procedures• Diagnosis• Care Plans |
|---|---|---|

This key patient data from your practice EHR is valuable to your care partners, and their data is valuable to your practice. Sharing this data supports your efforts to deliver the highest quality healthcare for your patients.

RHIO Explore+: Repository

- Review a list of care summaries contributed by clinical practices and choose specific care summaries to view or download.
- Download a care summary, which includes aggregated patient data from community data providers, including practice-generated information.
- Search for patient data from healthcare providers throughout New York State.
- Develop new, simplified workflows to support referrals and chart reviews.

Become a Data Contributor

Your clinical practice can be a Data Contributor to Rochester RHIO.

The first step is to contact your EHR vendor to learn more about how they support sending data to a Health Information Exchange. Then contact your Regional Account Representative or any member of the Support Team at 877-865-7446, or email info@grrhio.org.



Contribute today!

To learn more about RHIO Contribute or other RHIO services, contact:

Customer Service: 1.877.865.RHIO (7446)

Online Support Request: providerportal.grrhio.org

Email: info@grrhio.org



Rochester RHIO

Greater Rochester Regional Health Information Organization
200 Canal View Blvd., Suite 200 • Rochester, NY 14623
www.RochesterRHIO.org 1.877.865.RHIO (7446)